

# Target with confidence.

## Discover Hologic's Complete Contrast Biopsy Solution

**Affirm® Contrast Biopsy Software**, in combination with **I-View™ Contrast-Enhanced Imaging** and the **Affirm Upright Breast Biopsy Guidance System** delivers a more efficient breast biopsy procedure.



The Affirm Contrast Biopsy Solution enables the targeting and acquisition of breast tissue in lesions identified during contrast-enhanced mammography. Designed to maximise workflow efficiency whilst improving the patient experience, the Complete Contrast Biopsy Solution simplifies the breast biopsy process,\* even for challenging procedures.



### BIOPSY WITH CONTRAST

Target and biopsy lesions identified with 2D contrast-enhanced mammography through a stereotactic-based procedure, with a comparable diagnostic performance to breast MRI procedure.<sup>1,2</sup> Compare post-marker images in the same modality as the initial diagnostic contrast exam.



### EFFICIENT CLINICAL WORKFLOW

Improve the diagnostic experience by conducting the biopsy in the same room as the diagnostic imaging. Combining Affirm Contrast Biopsy software with the Affirm Upright Breast Biopsy Guidance System provides a familiar workflow, due to similarities with stereotactic biopsy.



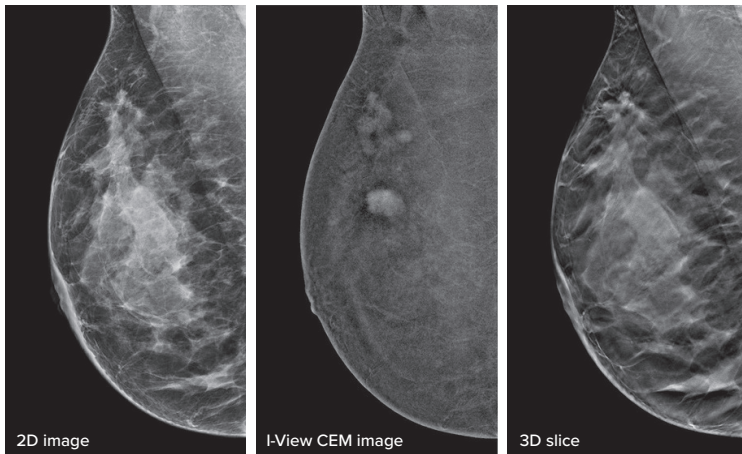
### IMPROVED PATIENT EXPERIENCE

Improve the patient experience with a shorter procedure time, higher tolerability and accessibility compared to breast MRI.<sup>1,2,3</sup> Patients experience the familiarity of the same room and equipment used during their diagnostic mammogram.

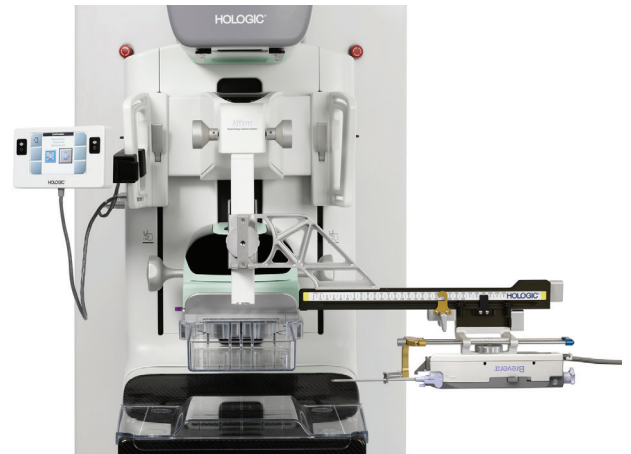
# Increase diagnostic confidence and acquire breast tissue in one seamless and efficient workflow.

Affirm® Contrast Biopsy software allows you to biopsy lesions identified during the I-View™ contrast-enhanced 2D mammogram. By leveraging the ability to provide 2D, contrast-enhanced, and tomosynthesis images under one compression,<sup>4</sup> I-View software provides anatomical and functional imaging all in one exam.<sup>5</sup>

The Affirm Upright Breast Biopsy Guidance System enables a quick transition from screening to biopsy, leveraging the same proven imaging chain<sup>6</sup> as the mammography system to improve 3D™ visualisation of suspicious lesions.\*\* The addition of the Affirm Lateral Arm accessory enhances your access to challenging lesions.<sup>6</sup>



I-View: 3-in-1 Contrast-Enhanced Mammography Imaging



Affirm Upright Breast Biopsy Guidance System

Functional imaging, using contrast-enhanced mammography (CEM), also compares favourably to breast MRI with similar sensitivity, higher specificity, and higher positive predictive value.<sup>7,8</sup> In addition, CEM provides a cost-effective diagnostic imaging alternative<sup>9</sup> compared to MRI, with a shorter procedural time.<sup>10</sup>

At Hologic, we are driven to deliver innovation which provides better outcomes for patients. Our Complete Contrast Biopsy Solution combines the benefits of CEM with immediate biopsy targeting. This improves your clinical efficiency by delivering both time and cost-savings,<sup>9</sup> whilst also optimising the patient experience.

Across our Breast Health Continuum of Care, we deliver smart solutions to complex diagnostic and treatment needs. Together, we can reduce the burden of breast cancer on your patients and ensure that more women, have more time in better health.

## System requirements

- Selenia® Dimensions® or 3Dimensions® Mammography System with 1.11/2.2 (or later) software version
- I-View 2.0 (or later) software version & hardware (copper filter)
- Affirm Upright Breast Biopsy Guidance System
- Affirm Contrast Biopsy software license
- Optional: Affirm Lateral Arm biopsy guidance accessory

## Additional requirements

- Contrast power injector: single or dual head
- Contrast reaction kit

CE 2797 **EC REP** Hologic BV, Da Vincilaan 5, 1930 Zaventem, Belgium

Breast & Skeletal Health | [Hologic.co.uk](http://Hologic.co.uk) | [euinfo@hologic.com](mailto:euinfo@hologic.com)

**References:** **1.** Alcantara R, Posso M, Pitarch M, et al. Contrast-enhanced mammography-guided biopsy: technical feasibility and first outcomes. *Eur Radiol.* 2023 Jan;33(1):417-428. **2.** Kamal R, Mansour S, Farouk A et al. Contrast-enhanced mammography in comparison with dynamic contrast-enhanced MRI: which modality is appropriate for whom?. *Egypt J Radiol Nucl Med* 52, 216 (2021) **3.** Hobbs MM, Taylor DB, Buzynski S, et al. Contrast-enhanced spectral mammography (CSEM) and contrast enhanced MRI (CEMRI): Patient preferences and tolerance. *J Med Imaging Radiat Oncol.* 2015;59(3):300-305. **4.** Chou C, Lewin J, Chlang C et al. "Clinical Evaluation of Contrast-Enhanced Digital Mammography and Contrast Enhanced Tomosynthesis-Comparison to Contrast-Enhanced Breast MRI" *Eur J Radiol.* 2015 Dec; 84(12):2501-8. [Epub 2015 Oct]. **5.** Burhenne LJW, Wood SA, D'Orsi CJ, et al. Potential contribution of computer-aided detection to the sensitivity of screening mammography. *Radiology.* 2000;215:554-562. **6.** Schradling S, Distelmaier M, Dirrichs T et al. Digital Breast Tomosynthesis-guided Vacuum-assisted Breast Biopsy: Initial Experiences and Comparison with Prone Stereotactic Vacuum-assisted Biopsy. *Radiology.* 2015 274:3:654-662. **7.** Li L, Roth R, Germaine P, et al. Contrast-enhanced spectral mammography (CESM) versus breast magnetic resonance imaging (MRI): A retrospective comparison in 66 breast lesions. *Diagn Interv Imaging.* 2017;98(2):113-123 **8.** Xing D, Lv Y, Sun B, et al. Diagnostic value of contrast-enhanced spectral mammography in comparison to magnetic resonance imaging in breast lesions. *J Comput Assist Tomogr.* 2019;43(2):245-251 **9.** Patel B, Gray R, Pockaj B, et al. Potential Cost Savings of Contrast-Enhanced Digital Mammography. *AJR Am J Roentgenol.* 2017;208(6):W231-W237. **10.** Coffey K, Jochelson MS. Contrast-enhanced mammography in breast cancer screening. *Eur J Radiol.* 2022;156:110513.

\*Compared to MRI procedures.

\*\*Compared with prone stereotactic vacuum-assisted biopsy.

SS-01435-EUR-EN Rev 002 © 2024 Hologic, Inc. All rights reserved. Hologic, Affirm, Dimensions, 3Dimensions, 3D, I-View, Selenia and associated logos are trademarks or registered trademarks of Hologic, Inc. and/or its subsidiaries in the United States and/or other countries. All other trademarks, registered trademarks and product names are the property of their respective owners. This information is intended for medical professionals and is not intended as a product solicitation or promotion where such activities are prohibited. Because Hologic materials are distributed through websites, eBroadcasts and tradeshows, it is not always possible to control where such materials appear. For information on specific products available for sale in a particular country, please contact your Hologic representative or write to [euinfo@hologic.com](mailto:euinfo@hologic.com).

